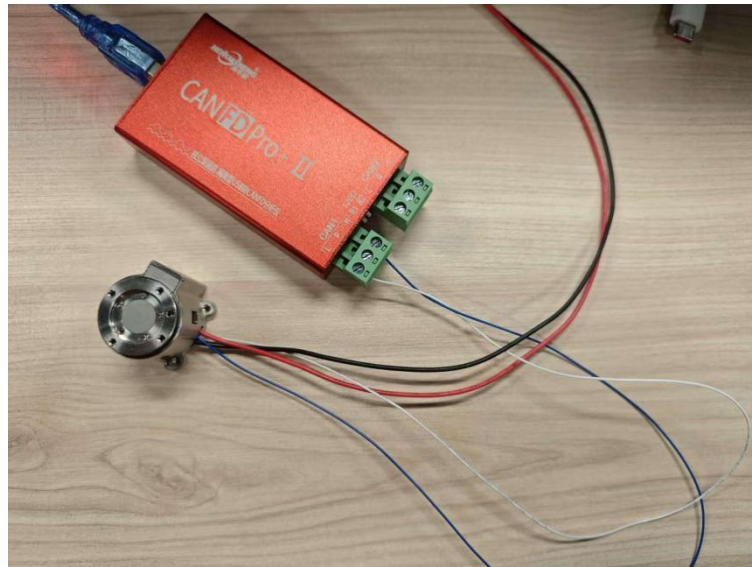


Integrated Drive-Control Usage Instructions V2

1. Test Specification

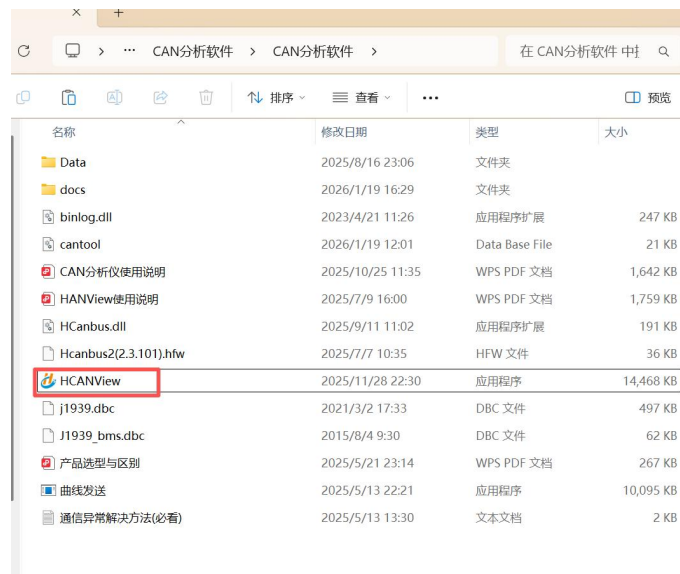
- ① Power supply connection: Connect red and black terminals to the DC power supply (12V/1A).
- ② Software communication: Connect the blue-white communication cable to the CAN analyzer and then to the computer.



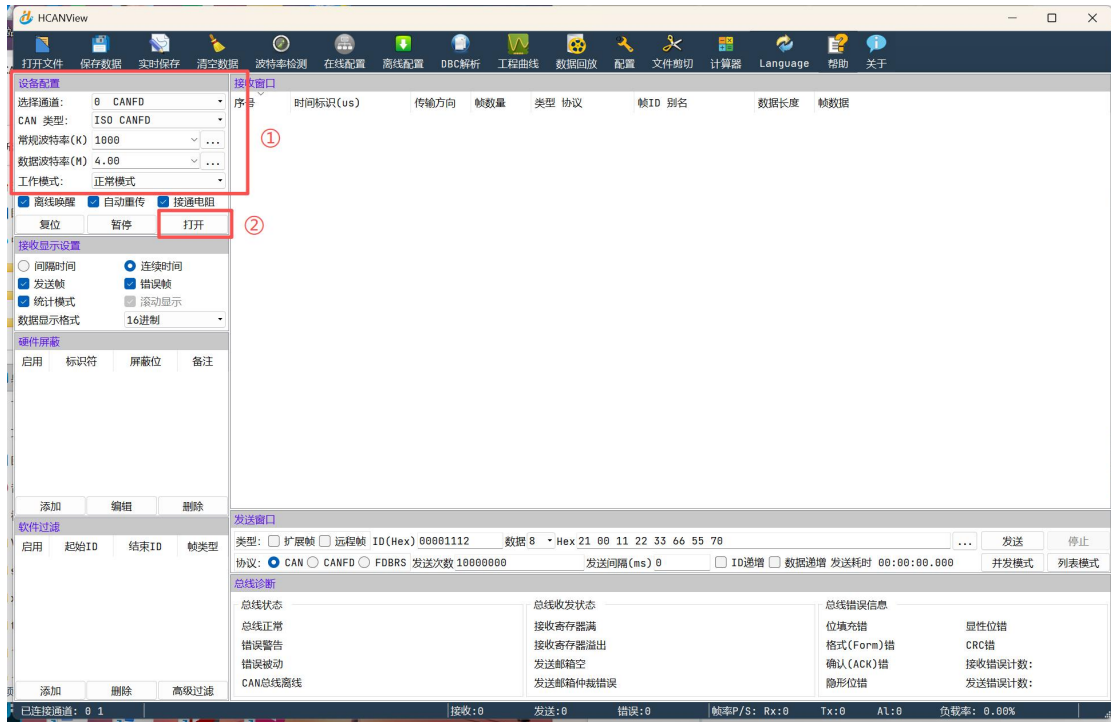
The CAN Analyzer Used Here Is:

https://item.taobao.com/item.htm?id=925542748000&mi_id=0000nksyLzBQ3-CXmBQoKpWtIs-C7ttRXJ1ehhWneHQn7I&skuld=5973038250695&spm=a21xtw.29178619.0.0

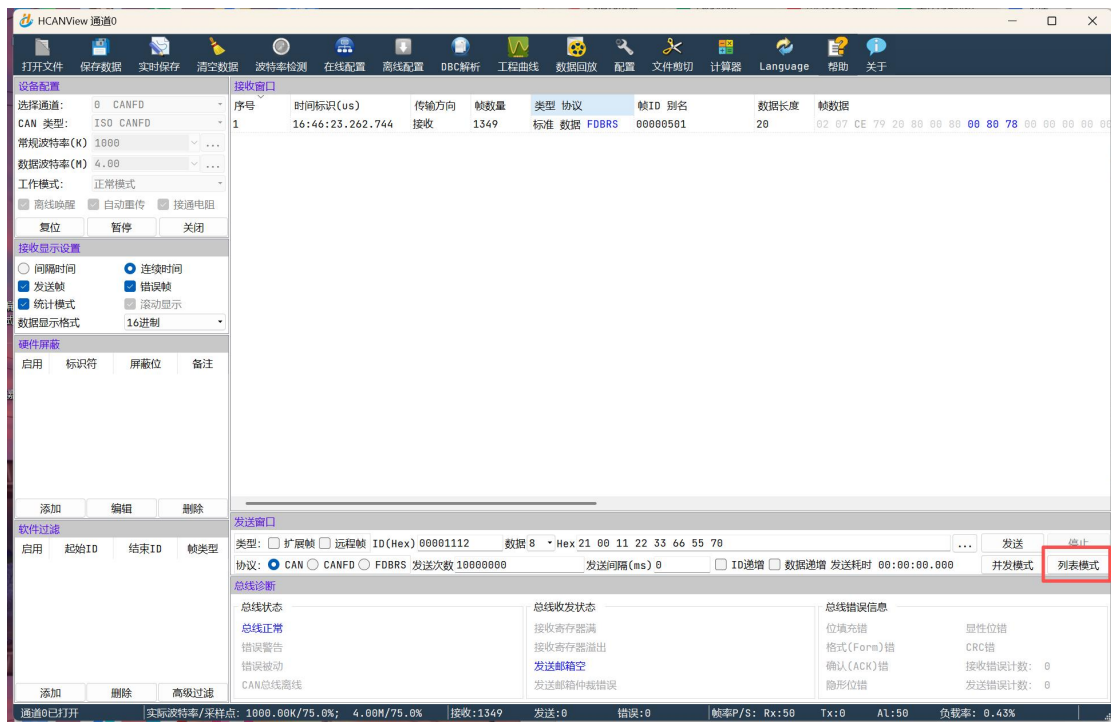
- ③ Open the software HCANView;



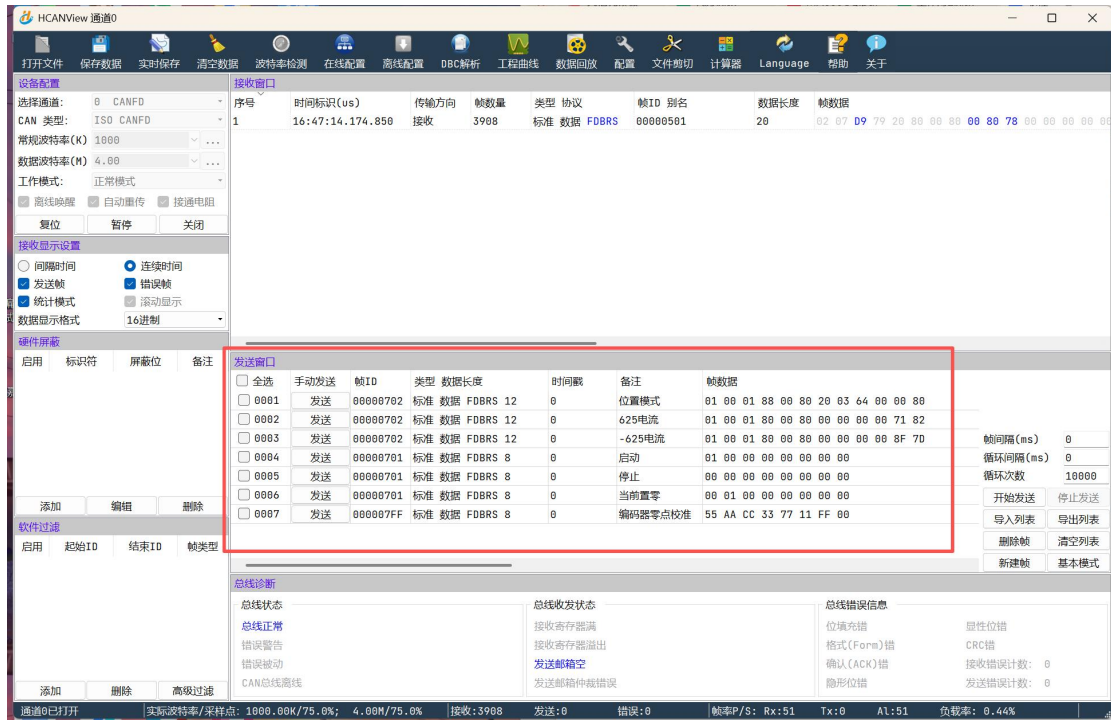
- ④ Follow the steps shown in the figure to configure the device.



⑤ Select List Mode;



⑥ As Shown in the Figure, You Can Configure Parameter Examples and Select Motor Operation After Sending.



2. Instance

The Communication Protocol Is Detailed in the Document "Integrated Drive CAN FD Protocol".

① Current Mode;

01 00 01 80 00 80 00 00 00 00 C8 80

Set position code value = 65537

Speed = 0

Kp = 0

Kd = 0

Current code value = 200

② Position Mode ;

01 00 01 80 00 80 20 03 64 00 00 80

Set position code value = 65537

Speed = 0

Kp = 0.008

Kd = 1

Current = 0